



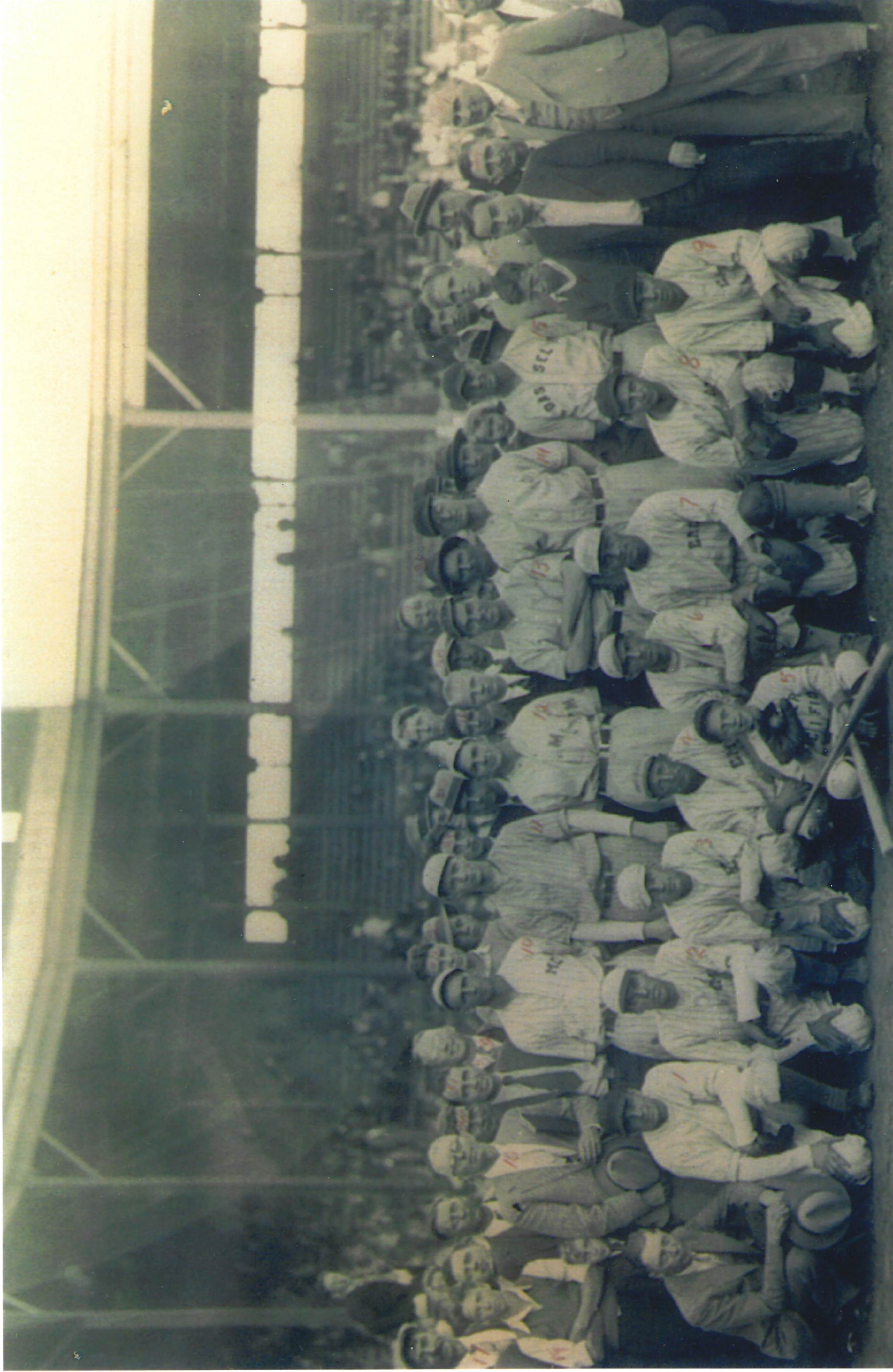
1939 - Maple Lake

92-48-1 From Howie Pennerty

1st Row - BAT BOY - G. DOUGHERTY

2nd Row L to R - Howie Pennerty, Elton Zackman, Mike Covette, "Thistles" Uecker,
Kenny Falk, Bud Gee, Jerry Elsenpeter

3rd Row L to R - Norm Gallup, "Lefty" Ebnert, Bill Englehardt, Tony Obergeriller,
Andy Hamm (Mgr), Louie Borman, Ken Keating, Jack Horstman.



LEXINGTON PARK ST. PAUL, MN. 1931

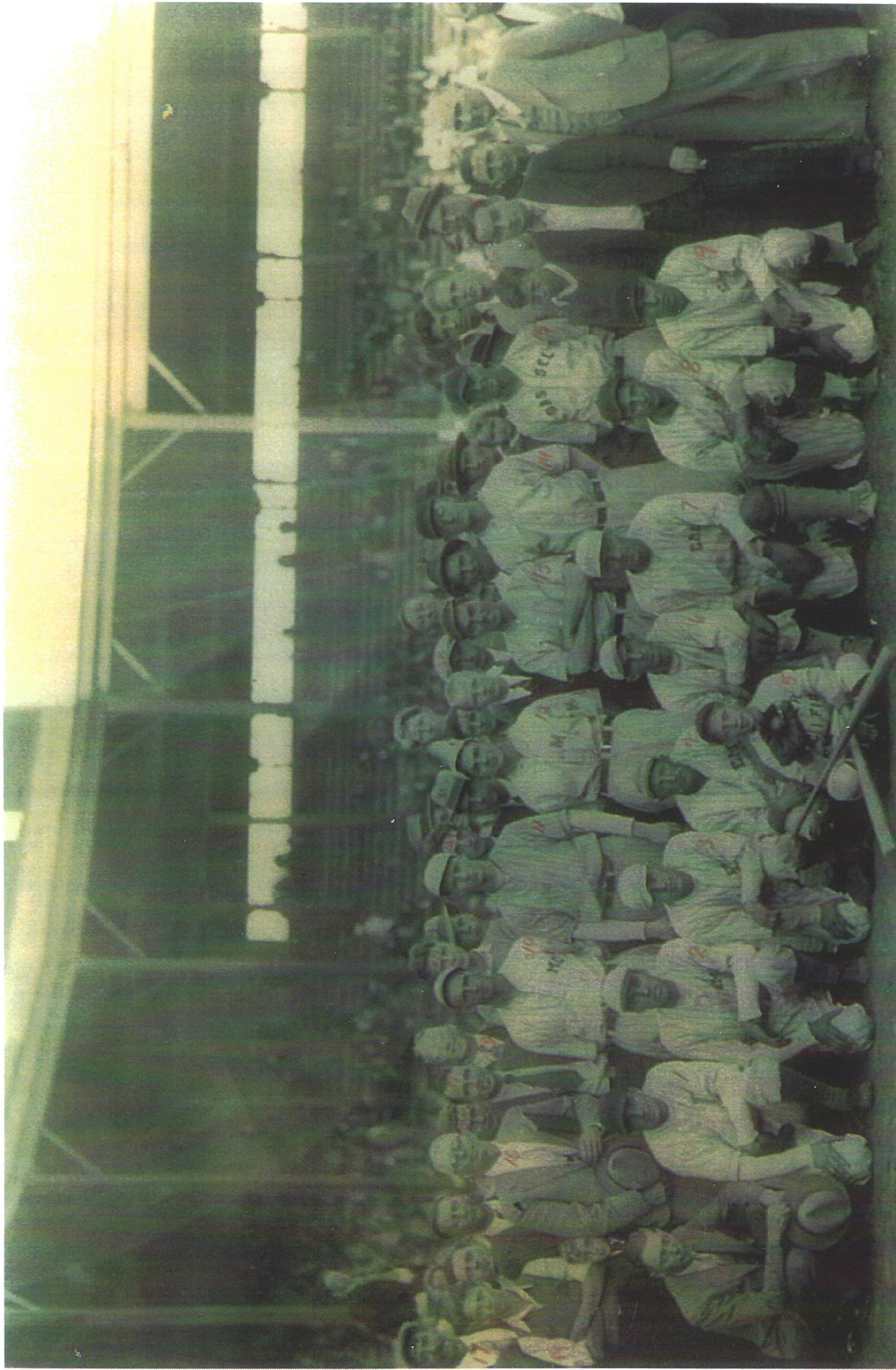
MAPLE LAKE, MN. 1931 STATE BASEBALL CHAMPIONS. PLAYERS (L TO R) 1. ED RICE, 2. ALVIN WOLFF, 3. DOUGLAS HAWKINS, 4. BILLY STUHR, 5. ~~BAB~~ **BAB** NUGENT, 7. CAL CALGREN, 8. BILL WILLIAMS, 9. ANDY HAMM, 10. FRANCIS HALL, 11. HOLLIS SMITH, 12. CLARENCE STUHR, 13. MELVIN MCKLIM, 14. BOB MULLER, 15. ? ? HILLSTROM. (L TO R) 16. JOHN HOLMEERG, 17. ED RIVERS, 18. MARK FLAHERTY, 19. RAY OLSON, 20. ED DIRCKS, 21. JIM LEAHY, 22. RAY ANTIL, 23. MARVIN GAGNON, 24. WM. RACHEL JR. 25. ERVIN EMON, 26. LOUIS GAGNON, 27. CLIFF PETERSON, 28. HERB BOLDUAN, 29. ED PETERSON, 30. ? ? NELSON, 31. ART GALLOP, 32. WM. RACHEL SR. 33. ARNOLD (BUD) ST 34. MAL MOONEY, 35. HARVEY LEAHY, 36. RAY MULLER, 37. MELVIN RUFF, 38. BOB SCANLON, 39. HENRY MAVENCAMP, 40. ? ? CHRISTIANSON.

MAPLE LAKE



MAPLE LAKE—Front row: George Vollhaber, Howard Gilliam, Eddie Raiche, Will Fairbanks, Jim Cosgrove, Len Bullock, Russ Baker, Frank Raiche. Second row: Clifton Jude, Bud McPherson, Bob Doherty, Cliff Bizil, Dea Elverun, Johnny Garbett, Jim Raff, Merl Meierhofen.

1947 State Towns



LEXINGTON PARK ST. PAUL, MN. 1931

MAPLE LAKE, MN. 1931 STATE BASEBALL CHAMPIONS. PLAYERS (L TO R) 1. ED RICE, 2. ALVIN WOLFF, 3. DOUGLAS HAWKINS, 4. BILLY STUHR, 5. ~~BAB~~ ~~SCOTT~~, EDDIE NUGENT, 7. CAL CALGREN, 8. BILL WILLIAMS, 9. ANDY HAMM, 10. FRANCIS HALL, 11. HOLLIS SMITH, 12. CLARENCE STUHR, 13. MELVIN MCKLIM, 14. BOB MULLER, 15. ? ? HILLSTROM. (L TO R) 16. JOHN HOLMEERG, 17. ED RIVERS, 18. MARK FLAHERTY, 19. RAY OLSON, 20. ED DIRCKS, 21. JIM LEAHY, 22. RAY ANTIL, 23. MARVIN GAGNON, 24. WM. RACHEL JR., 25. ERVIN EMON, 26. LOUIS GAGNON, 27. CLIFF PETERSON, 28. HERB BOLDUAN, 29. ED PETERSON, 30. ? ? NELSON, 31. ART GALLOP, 32. WM. RACHEL SR., 33. ARNOLD (BOB) ST, 34. MAY MOONEY, 35. HARVEY LEAHY, 36. RAY MULLER, 37. MELVIN RUFF, 38. BOB SCANTON, 39. HENRY MAUTENCAMP, 40. ? ? CHRISTIANSON